

Preston Marina Brokerage

Riversway Docklands, Preston, PR2 2YP Telephone 01772 733595
Web site: www.prestonmarina.co.uk E-mail: info@prestonmarina.co.uk



Princess 414 – “Regis Filia”

Possibly the finest motor cruiser we have ever offered for sale in our long company history.

VIEWING STRICTLY BY PRIOR APPOINTMENT PLEASE



PLEASE NOTE: Whilst every care has been taken in their preparation, the correctness of these particulars is not guaranteed, these details are intended only as a guide. This boat and its inventory is owned and offered for sale by a private individual not acting in the course of trade. Purchasers and prospective purchasers are advised that there are no guarantees or warranties when purchasing from such an individual. We strongly recommend that independent professional marine surveyors and/or engineers be engaged to check the boat, its systems and its inventory (including any trailer) prior to purchase. After purchase there are no remedies for any faults found. Preston Marine Services Ltd. act as an agent for the private vendor and can not offer any guarantees.

Preston Marina Brokerage

Riversway Docklands, Preston, PR2 2YP Telephone 01772 733595

Web site: www.prestonmarina.co.uk E-mail: info@prestonmarina.co.uk

- This broker challenges anyone to find a better presented example of a Princess 414 anywhere in the world.
- **Extensive refurbishment** and modernisation over the past 5 years (summarised later).
- Aft cabin design provides **genuine privacy between owners and their guests**, with a large owner's aft cabin with double island berth and en-suite WC and separate en-suite shower room. Forecabin with 2 single / V-berth and en-suite. 4 extra berths can be created in the forward dining saloon and wheelhouse saloon. **Ability to sleep 8 people in total.**
- 2 x **Volvo Penta 255hp diesel engines** (TAM D 60C) on shaft drives.
- Top speed approx. 24 knots – Cruising speed approx. 16 knots.
- A proven heavy weather distance offshore cruiser from one of the world's premium builders.
- Good size for a **liveaboard**.
- **Low cost marina fees** at her current location from where she can cruise to North Wales, the Isle Of Man, Ireland or the west coast of Scotland.
- **3 months free marina berthing** is included with the sale - subject to application.



PLEASE NOTE: Whilst every care has been taken in their preparation, the correctness of these particulars is not guaranteed, these details are intended only as a guide. This boat and its inventory is owned and offered for sale by a private individual not acting in the course of trade. Purchasers and prospective purchasers are advised that there are no guarantees or warranties when purchasing from such an individual. We strongly recommend that independent professional marine surveyors and/or engineers be engaged to check the boat, its systems and its inventory (including any trailer) prior to purchase. After purchase there are no remedies for any faults found. Preston Marine Services Ltd. act as an agent for the private vendor and can not offer any guarantees.

Preston Marina Brokerage

Riversway Docklands, Preston, PR2 2YP Telephone 01772 733595

Web site: www.prestonmarina.co.uk E-mail: info@prestonmarina.co.uk

Accommodation



Forecabin with large V-berth. Note the LED "mood" lighting. Central heating to all cabins.



En-suite WC and shower.



Lower saloon—which can convert to another double berth. Galley to starboard with gas oven, 4 burner hob, 2 sinks and fridge.



Deck saloon—which can convert to another double berth. Master helm to port. Cabinets to starboard.



Owner's aft cabin with island double bed. En-suite WC and separate en-suite shower room. Central heating.



PLEASE NOTE: Whilst every care has been taken in their preparation, the correctness of these particulars is not guaranteed, these details are intended only as a guide. This boat and its inventory is owned and offered for sale by a private individual not acting in the course of trade. Purchasers and prospective purchasers are advised that there are no guarantees or warranties when purchasing from such an individual. We strongly recommend that independent professional marine surveyors and/or engineers be engaged to check the boat, its systems and its inventory (including any trailer) prior to purchase. After purchase there are no remedies for any faults found. Preston Marine Services Ltd. act as an agent for the private vendor and can not offer any guarantees.

Preston Marina Brokerage

Riversway Docklands, Preston, PR2 2YP Telephone 01772 733595

Web site: www.prestonmarina.co.uk E-mail: info@prestonmarina.co.uk



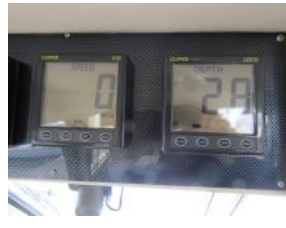
New vinyl upholstery to flybridge.



The stern deck - teak effect to all deck surfaces.



The master helm position



Recent electronics include GPS, VHF DSC, Auto pilot, Speed Log, Depth Sounder.

Refurbishment works over the past 5 years and inventory highlights;

Autopilot (repeated to flybridge), Log (repeated), Depth Sounder (repeated), 2 GPS Plotters, 2 x VHF (1 is DSC), Trim Tabs, Battery Monitor, 2 x compass, Galvanic isolator and display, auto bilge pumps, fire alarm to engine bay and galley.

Engine heat exchanger cores replaced, new exhausts to both engines, Hot water calorifier, 240v Shore Power. 4 x new 12v batteries in 2016.

Eberspacher D4 central heating to all cabins, new head-linings to all cabins, Electric quiet flush toilet, Battery charger / inverter, Holding tank and gauge, All light fittings replaced with LED lights, LED "mood" lighting (internal and remote control external), step lights, All woodwork re-varnished, new floor coverings in galley, TV and Blu Ray in saloon, new fly bridge cushions, 3 x refrigerators, TV and DVD in aft cabin, Bathing platform and steps recently varnished. Stainless Steel Davits, Radio / CD to saloon and flybridge.

New 40m anchor chain with chain counter, matching black mooring warps and fenders.

"Regis Filia" has been out of the water every winter during the current (5 year) ownership.

Specifications (all dimensions are approx.);

LOA; 41ft 2 in (12.55m) **Beam;** 13ft (3.96m) **Draught;** 3ft 3in (0.99m)

Air draught; 13ft 6 (4.11m) **Displacement;** (empty); 9,000kgs

Fuel Capacity; 1180 lt (260 gal) **Water Capacity;** 455 ltr (100 gal)

Cruising Speed; circa. 16 knots* **Max Speed;** approx. 24 knots*.

Fuel consumption (approx.) 70 litres / hour at cruising speeds*. (1 mpg*)

* Performance figures are a guide only.

Engine hours; 2,000 approx. Last serviced in 2016 by owner.

Built 1985.

Asking price; £79,950

The above asking price assumes that VAT is paid on the yacht, with proof of this to be supplied by the vendor prior to the completion of a sale.

"Regis Filia" is currently registered under a Part One registration.

The yacht is lying at Preston Marina, and viewing is by prior appointment.

Please call 01772 733595 or email info@prestonmarina.co.uk to arrange a viewing.

"Regis Filia" is latin for "Princess"

PLEASE NOTE: Whilst every care has been taken in their preparation, the correctness of these particulars is not guaranteed, these details are intended only as a guide. This boat and its inventory is owned and offered for sale by a private individual not acting in the course of trade. Purchasers and prospective purchasers are advised that there are no guarantees or warranties when purchasing from such an individual. We strongly recommend that independent professional marine surveyors and/or engineers be engaged to check the boat, its systems and its inventory (including any trailer) prior to purchase. After purchase there are no remedies for any faults found. Preston Marine Services Ltd. act as an agent for the private vendor and can not offer any guarantees.