

Pilotage Notes for the Ribble entrance and Preston Marina

Approach should be made from Gut Gas Buoy, commencing 2 hours before High Water Liverpool. Small craft drawing 1.5 metres or less may commence entry some half an hour earlier.

Vessels should hold a course from Gut to Waypoint B and thence to Waypoint C where the transit of the 11.5 mile perch and the White Tower Church will lead safely through the gap in the South Training Wall and into the River Ribble which is marked with lit and unlit perches. Entering on this course the minimum depth of water should be 3.5 metres at 2.5 hours before H.W. and 5 metres 1.5 hours before H.W.

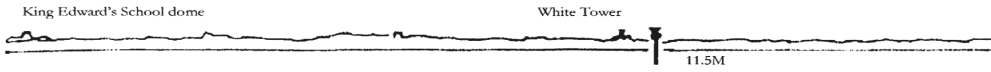
If making an entrance in boisterous weather or in a vessel with a deep draft the route from Gut via Waypoints Z, B and C should ensure a minimum depth of water of 6 metres 2 hours before H.W. Liverpool.

When proceeding from Waypoints Z & B allowance should be made for the Easterly set of the flood tide.

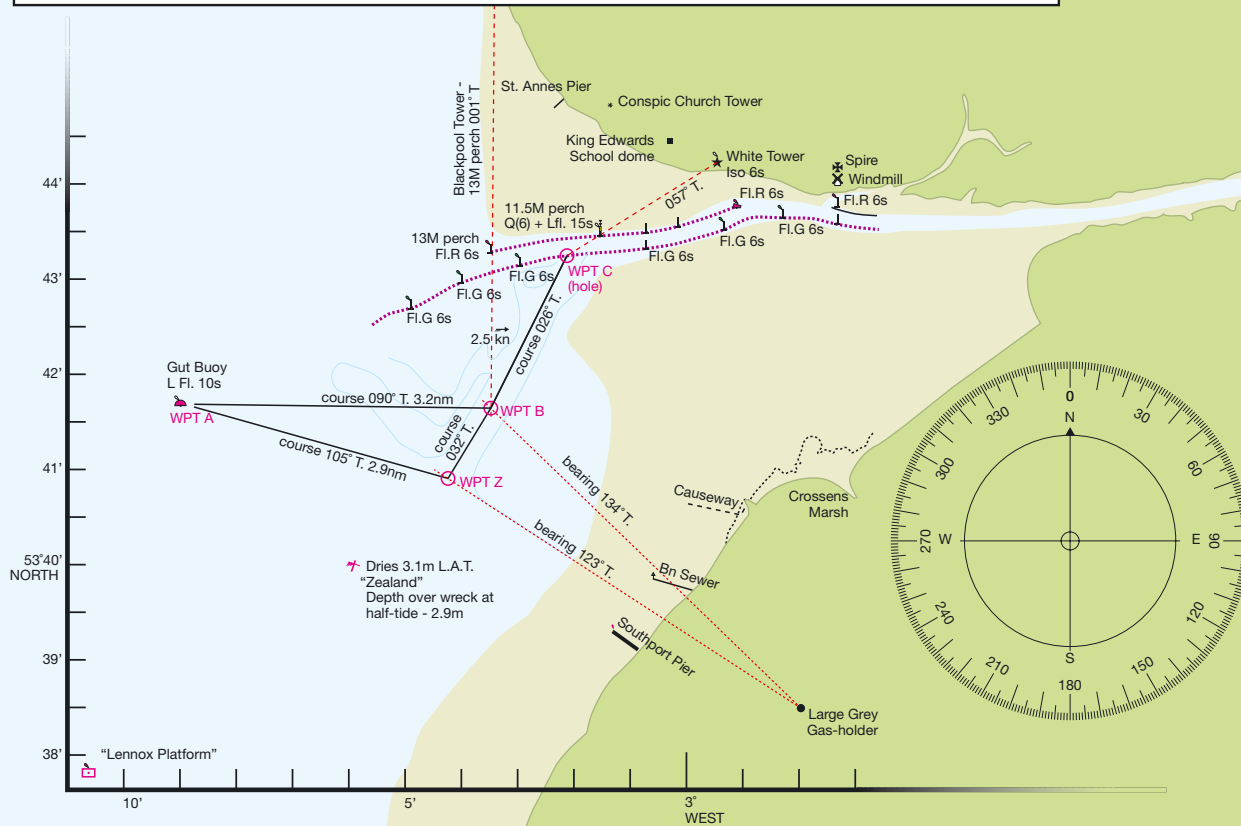
If making for Preston on Neap tides (say 7.0 metres Liverpool) with boat speed 5 knots and draft up to 2.0m, depart Gut buoy 2 hours before High Water. Follow above directions and then continue up river between perches. Arrival at Preston will be within half an hour of H.W. Gates remain open until H.W.+2 hours after which time the lay-by berth is available in deep water just outside the lock gates and out of the tideway.

NOTE: NO RESPONSIBILITY CAN BE ACCEPTED BY PRESTON MARINE SERVICES LTD AS A RESULT OF THE USE OF THIS PLAN JANUARY 2002

REFER TO ADMIRALTY CHART 1981
WATER COVERAGE SHOWN IS
MEAN SEA LEVEL, LIVERPOOL HW ± 3HRS



Silhouette view of St Annes skyline showing White Tower and 11.5m perch as seen from a vessel approaching gap in the South Training Wall at Waypoint C



Waypoint	Description	Latitude	Longitude
WAYPOINT A	GUT GAS BUOY	53° 41.75' N	03° 08.90' W
WAYPOINT B	GUT CHANNEL	53° 41.70' N	03° 03.43' W
WAYPOINT C	HOLE IN WALL	53° 43.29' N	03° 02.10' W
WAYPOINT Z	GUT ENTRANCE	53° 40.96' N	03° 04.20' W



Preston Marina
Navigation Way
Riversway Docklands
Preston
Lancashire
PR2 2YP
Telephone 01772 733595
Fax 01772 731881
Email info@prestonmarina.co.uk

